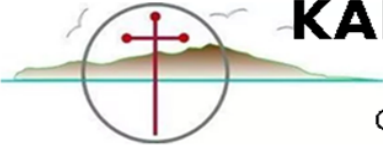


TOGETHER

KAPITI UNITING PARISH



ChristianChurchesNZ – Methodist – Presbyterian

APRIL 2024



World Day of Prayer Service at Raumati

From the Minister's Desk

In this season of Easter when we look for signs of new life and growing peace in our communities, our country and our world, it is discouraging to see so much division, disregard for the needs of the powerless and denial of values which we hold dear.

Let us commit ourselves to an unshakeable belief in the possibility of redemption, even in the darkest corners of our world. Let us have faith in humanity as well as in God in an age of faithlessness. And let us be grateful for the empowering story of Christ's resurrection which is the truth that sets us free.

Rev Anna Gilkison

Living Wage in Kapiti:

Rev Anna was the sole representative of the Raumati, Paraparaumu and Waikanae communities at an afternoon tea with the Mayor of Kapiti on 13th March to celebrate KCDC becoming Accredited as a Living Wage Employer.

This has only been won by the power of community and we know from talking with our lowest-paid workers that it makes a real difference to them.



News from Waikanae

Harvest Thanksgiving Festival.

Waikanae is a place where things grow well: lush bush on the hills and in numerous groves, trees along the riverbanks, and generously productive gardens. So the Harvest Thanksgiving Festival is a joyful day for us.

On Sunday 3 March our little church was filled with good things we had grown, made and provided. Flowers, fruit, vegetables, jars of preserves and groceries decorated the entrance and the windowsills, and were heaped on and around the Communion table. A glass jug of pure, clear water stood on the table, with a large round pull-apart loaf of cinnamon scrolls to be shared at morning tea.



Sue Hodgson, with others, led the congregation in creative and colourful worship which engaged us in thanksgiving and caring for our Planet Earth.

Our harvest goods were given to Women's Refuge.



Waveney and Malcolm Bowman talked to us about the American Thanksgiving, observed in Autumn in the USA (November). They live at Stonybrook, Long Island, New York State, and spend several months each year in their Waikanae house. They compared our Harvest Festival tradition with the history and celebration of American Thanksgiving, a non-religious occasion marked by a public holiday, when families gather to feast together on turkey and pumpkin pie.

Our Harvest Festival may perhaps seem inappropriate for the season of Lent. But surely it can remind us of the ripening, the coming to fruition and fulfilment of God's purpose in the life, death and resurrection of Jesus.

Women's Fellowship.

Members attended the World Day of Prayer service on 1 March at St Michael's Anglican Church. The service, prepared by Christian women of Palestine was especially moving in the light of the current situation of Palestinians in Gaza.

At our March meeting we prepared for the MWF Special Project service to be held in May.

Lent and Easter.

Study group. Several Waikanae members have regularly attended the Lenten Study Group at Raumati and have found challenge and inspiration in the series on Christians in the Middle East.

Worship: On 17 March Desmond Corrigan presented **The Road to the Cross**, revisiting a service based on the 2023 Waikanae Holy Week studies.

Palm Sunday worship was led by Rev Robin List.

The **Easter Sunday** service of Holy Communion, to be led by John and Diana Roberts will focus on the theme of endings and beginnings.

Looking ahead.

Soup Group will meet at 10.30 on Tuesday 23 April at the home of Marie and Don Smith to explore theme of Grace. A soup-and -and - rolls lunch will be provided.

Diana Roberts

About People



We wish

HAPPY BIRTHDAY

To all those in this parish celebrating
birthdays in April

and we wish

HAPPY ANNIVERSARY

to those who are celebrating anniversaries this month too, we hope
you enjoy your special occasions.

We especially think of those who are unwell and those in hospital and
we send you our very best wishes for a good recovery.

**We sadly acknowledge the death of Shirley Nalder who some of
you will remember when she was more active in our parish quite a
few years ago. She was a sweet and gentle lady.**

We are thankful that we have had a good summer weather wise and
though the mornings and evenings are getting cooler now the days are
calm and lovely.

With our very best wishes to you all,

*THE PASTORAL CARE TEAM, Carole, Lyn, Bastiana, Mary,
Erice, Kay, Merrill and Diane*

Think on This

I simply argue that the cross be raised again at the centre of the market place as well as on the steeple of the church. I am recovering the claim that Jesus was not crucified in a cathedral between two candles, but on a cross between two thieves; on the town garbage heap; at a crossroads so cosmopolitan that they had to write his title in Hebrew and in Latin and in Greek..... at the kind of place where cynics talk smut, and thieves curse, and soldiers gamble. Because that is where he died. And that is what he died about. And that is where churchmen ought to be, and what churchmen and women should be about.

by George MacLeod



“Forgiveness is the fragrance that the violet sheds on the heel that has crushed it” *Mark Twain*



Parish Summer Gala 24th February 2024



The book stall was very popular



A brisk trade in plants and flowers



The downstairs meeting room was set up as an art gallery café serving tea, coffee and cakes with paintings offered for sale



There was face painting and other activities for children in the hall

We were blessed to receive donations of plants, flowers, books, cakes, cookies, sausages, tomato sauce, paintings, and also many other items for Thrifty Place.

Our whole Parish joined together in this event for the people of our local community. We thank all those who gave their time to volunteer before, during, and after the Gala to make it such a success.

Waikanae Women's Fellowship

The "Soup Group" will meet on Tuesday 23 April 10.30am at 18 Sunny Glen Waikanae. All welcome

Contact: Marie Smith 04 905 7229

Raumati Women's Fellowship

The Raumati Women's Fellowship will meet on the 11 April at 10am in the meeting room.

The speaker will be Keltie Wesling from the Kaibosh Organisation. All are welcome.

Contacts: Lyn Martin 04 904 8361 and
Merrill Baker 04 902 4134 or 027 353 2307

Parish Directory

Parish Minister: Rev. Anna Gilkison 04 902 5809
kapitiuniting@outlook.com

Parish Council:

Secretary: Jan Rae 021 1127739
janiserae47@gmail.com

Treasurer: Cathy Drummond 04 902 5809
kuptreasurer@gmail.com

Envelope Secretary: Dorothy Woods 04 905 9099
barrie.woods22@gmail.com

Together Editor: Fiona Bell 04 902 5809
kapitiuniting@outlook.com

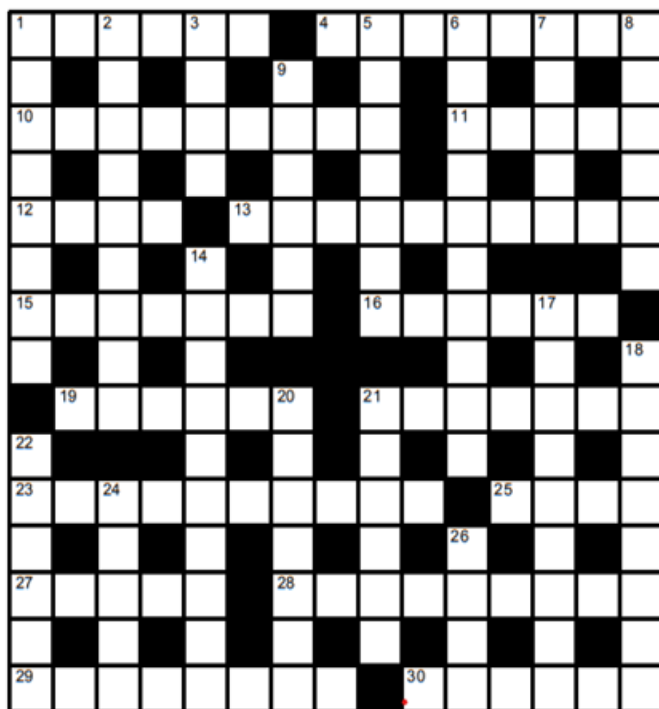
BIBLE CROSSWORD I

Across

- 1 An ancient weight (6)
 4 Seemed (8)
 10 New Testament book (9)
 11 Unit of length (5)
 12 '...it is a ____ thing the king requireth' (Dan 2:11) (4)
 13 Contemplation (10)
 15 Abigail supplied David with one hundred clusters of these (7)
 16 A son of King David (6)
 19 Concurred (6)
 21 Light sources (7)
 23 Propitiations (10)
 25 A false god (4)
 27 Gather (5)
 28 Abimelech was hit by this (9)
 29 Instructors (8)
 30 Hastily (6)

Down

- 1 Skilled animal workers (8)
 2 Inspiring (9)
 3 Compass point (4)
 5 Intense emotion (7)



by *Philologus*

© BiblePuzzles.org.uk

- 6 The words of Jeremiah said not to listen to these (10)
 7 Jewish leader (5)
 8 'He is proud, knowing nothing, but _____ about questions and strifes of words...' (1 Tim 6:4) (6)
 9 Bread makers (6)
 14 In this year of King Nebuchadrezzar's reign, Nebuzaradan arrived in Jerusalem (10)
 17 Ancient city of Og, King of Bashan (9)
 18 Stringed instrument (8)
 20 Joseph, perhaps? (7)
 21 Tiny amount (6)
 22 Jesus did this with authority (6)
 24 Last letter of the Greek alphabet (5)
 26 Province of the Roman Empire (4)



trade aid

Some of you may have read the sad news that Trade Aid shops across the country are closing over the next few months. A link to the press statement regarding this closure can be found here. <https://www.stuff.co.nz/business/350223165/trade-aid-close-shops-focus-wholesale-business>

Staff at our Trade Aid shop are devastated as you can imagine. Our shop in Coastlands, under Vicki Black our Shop Manager, has been most successful and has been one of the top four shops in the country in recent times. We've helped to make a difference for Trade Aid's artisans and farmers.

In their individual ways all our staff and volunteers have had a positive influence in the shop. They cared about the customers. They cared about Trade Aid. And they enjoyed the unique retail environment

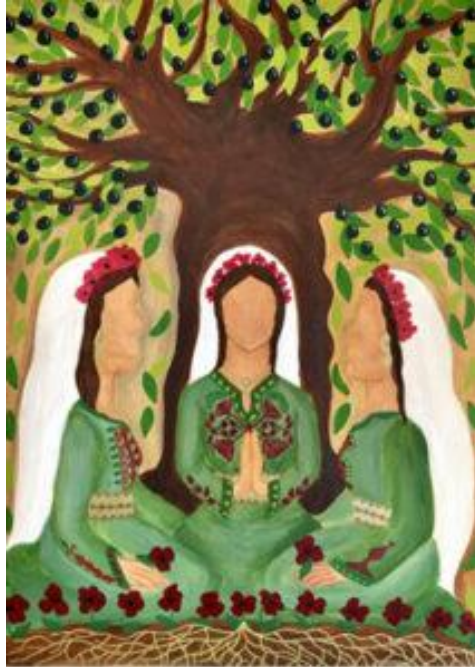
As customers, we will miss these committed people and this vibrant, unique shop. I know that the staff and volunteers would welcome a visit from you, before the local shop closes (probably pre June).

Do keep an eye out for our sale – yes, your last chance to browse and buy unique hand-made products, your favourite chocolate and other food items.

Marg Lees

Trade Aid shopper and trustee.

World Day of Prayer on 1 March 2024



This year the WDP Service for all the churches of Raumati and Paraparaumu was hosted by our Raumati Church.. The beginning of the service is shown in the photograph on the front cover. The theme of the Day of Prayer was:

“I Beg You... Bear With One Another in Love,”
based on Ephesians 4:1-7

The painting above is by Halima Aziz, a young Palestinian artist who, like many Palestinians, left her country after the violence in Gaza in 2008. She now lives in Germany.

The painting shows three Palestinian Christian women praying together in nature in a peaceful place. In her work, the artist has different motives and symbols that indicate the origin of these women and their cohesion. These are the following symbols featured in this artwork:

Olive trees/branches are a sign of everlasting and abundant life because they can live for thousands of years. Some of the olive trees in Palestine today were growing there during the time of Jesus.

The golden roots are underlining the fact that the Palestinians will always exist and as they exist, they will always resist for their rights and freedom. It is painted in gold because it is something precious, something no one can take away from the Palestinians because they are deeply rooted.

Poppy flowers are abundant and meaningful to Palestinians. They remind Palestinians of loved ones who have given their lives for their country.

Traditional Palestinian dresses like the tateez (embroidery) thobe (dress) or the white scarf. It represents the Palestinian people and is full of art and history.

The keys are a symbol of the hope to return back to Palestine. Many Palestinians carry with them the keys of their homes they had to leave, no matter where they are around the world. They pass the keys on to their children so they will never lose hope of a peaceful return one day in the future.

What makes World Day of Prayer special?

- We are women calling out to God for people in need throughout the world.
- World Day of Prayer is the only place that women's voices are heard in some countries.
- We are linked in strong international relationships of mutual resourcing.
- We use ecumenical, lay leadership by women, so this helps us in growing understanding of other cultures and denominations.
- We support aid projects through the giving at the yearly Worship Service.
- We aim to help the world, one powerful prayer at a time.



Answers to crossword

Across 1 Shekel, 4 appeared, 10 Ephesians, 11 cubit, 12 rare, 13 mediation, 15, raising, 16 Nathan, 19 agreed, 21 torches, 23 atonements, 25 Baal, 27 Glean, 28 millstone, 29 teachers, 30 rashly

Down: 1 shearers, 2 exhorting, 3 east, 5 passion, 6 enchanters, 7 rabbi, 8 doting, 9 bakers, 14 nineteenth, 17 Ashtaroth, 18 psaltery, 20 dreamer, 21 tittle, 22 taught, 24 omega, 26 Asia

April Services

	Waikanae 10am	United@9 9am	Raumati 10am
7th	Worship Group	Heather List (and Rev Robin List HC)	Kevin Boyce (and Maureen Calhaem HC)
14th	Rev Anna Gilkison HC	Combined: Maureen Calhaem	
21st	Rev Robin List	Barrie Woods	Rev Anna Gilkison
28th	Rev Anna Gilkison	Combined: Rev Roger Wiig	

April: Regular Events

Tuesdays	10am-12pm 11am-4pm 1-2.30pm	Women's Craft Group, Raumati Thrifty Place Preschool Music Group Raumati
Thursdays	10-11.30am 11am-4pm	Raumati Playgroup Thrifty Place
Saturdays	10.30am-1pm	Thrifty Place

April: for your diary

2 nd	1-2.30pm	Music Playgroup, Raumati Hall
4 th	10-11.30am	Raumati Playgroup
8 th	1.30-4pm	Board Games, Carole Ruding's home
9 th	10am-12pm	Pastoral Care, Raumati
	1-2.30pm	Music Playgroup, Raumati Hall
10 th	10-11.30am	Property and Finance Group
11 th	10-11.30am	Raumati Playgroup
	10am-12pm	Raumati Women's Fellowship
14 th	12pm	After Service Lunch, Relish Cafe
16 th	1-2.30pm	Music Playgroup, Raumati Hall
17 th	10am -12pm	Music and Worship Group, Raumati
18 th	10-11.30am	Raumati Playgroup
	10.30am -12pm	Coastal Villas church service, Dining room
22 nd	1.30-4pm	Board Games, Carole Ruding's home
23 rd	1-2.30pm	Music Playgroup, Raumati Hall
25 th	All day	Anzac Day – Parish office closed
	12-4pm	Thrifty Place
26 th	10am-12pm	Parish Council, Raumati
30 th	10-11.30am	Raumati Playgroup

