

# TOGETHER

## KĀPITI UNITING PARISH



ChristianChurchesNZ – Methodist – Presbyterian  
10 Weka Road, Raumati Beach, Paraparaumu 5032

JUNE 2026



*Alisi Barton speaking about Tonga at the  
Raumati Women's Fellowship Special Service  
(more details on page 8)*

# From the Minister's Desk

Every month a team of people contributes to the production of this magazine called 'Together' and we appreciate them all – the people who keep us informed, the people who contribute articles, the regulars and irregulars, the photographers, and the folders and distributors of the magazine.

Behind all this activity, in the shadows you might say, is our office administrator, Fiona Bell, who assembles the Together. She brings to the magazine her technological skills and her commitment to the wider community of the church, including our building hirers. She recognises the importance of the everyday things in each of our lives, as well as the larger events in the life of the Church.



This month I wanted to shine a light on our editor, not simply to acknowledge her monthly achievement in making Together a magazine worth reading; but also to bring the pages to life in a new way through our better understanding of the person of our administrator and what matters to her.

This is Fiona's story:

*I was born in England but moved overseas when I was 3 months old because of my father's job as a British diplomat. I first lived in Lebanon (where I was baptised Anglican) and then in Yemen, before returning to London and starting boarding school age 6. From then on my school and university holidays were wherever*

*my parents were living – London, Paris, Abu Dhabi, Brussels, Kuwait, Cyprus. As an adult I would also visit them in Occupied Jerusalem, Lebanon and Qatar.*

*Growing up among the struggles in the Middle East, seeing the situation up close, knowing people who were directly involved in the conflict, made me passionate about social justice and adherence to the core Christian values of caring for and treating all people well regardless of their ethnic background or economic status.*

*My South African husband and I moved to New Zealand with our two children (now 3 children) in 2006. We were overwhelmed by the friendly welcome we received from people here and have felt this is our lasting home. I set up a playgroup at our new church in Whitby and also a Prayer Quilt group there which is still thriving after 15 years.*

*I was seriously ill for many years and unable to have a job, so I volunteered at the St Anne's Pantry Food Bank in Porirua. We delivered parcels of food, toiletries, pet needs, cleaning products, etc. to the homes of families in financial difficulties.*

*When my health recovered, I started working as the administrator at the Pantry. This was a very fulfilling role which I loved but, unfortunately, increasing demand and decreasing donations meant we were forced to close down.*

*However, there was a silver lining for me, as I am now working in the office of KUP - a caring and socially committed organisation with lovely, friendly, members, and which I am proud to be part of.*

***Rev Anna Gilkison***

# News from Waikanae

## Worship

The Women's Fellowship (MWF) Service, led by Marie, has been a highlight of our May worship for many years. In the service on 17 May the focus on the **National MWF Special Projects** was an opportunity to learn about caring initiatives both in NZ and overseas.

This year we supported the Starship Foundation, which works with the national Starship Children's Hospital based in Auckland, offering care for very sick children from around our country. Women of the congregation led worship. Beth Manning outlined the work of the Foundation, which provides services, equipment and support for the hospital, its child patients and their families.

Marie introduced the Christian World Service (CWS) partnered project which works with the Tongan Community Development Trust to strengthen community resilience and improve mental health support across the islands. She interviewed Meri Risati-Garrett about growing up in the Tokelau Islands.





Our congregation generously donated \$420.00 over the soup and rolls lunch following the service.

In her **Pentecost Service** Maureen Calhaem shared with us the joy, hope, power and mystery of the Holy Spirit. Her practical illustrations of kites, a dove, fire – and chocolate fish! – gave us new insights.

The **Combined Parish Service** held at Waikanae on 31 May strengthened our church community in our faith journey together.

The **Kapiti Community Foodbank** has sent a further letter of appreciation – an encouragement for us to continue with our donations.

**Women's Fellowship** met at the home of Don and Marie Smith on 19 May. Marie's quiet devotional time drew us into prayers for peace in the many areas of conflict throughout the world.

Jenny told us of her recent stay on the Chatham Islands, a remote and unique part of Aotearoa.

**Soup Group** will gather on 16 June to think about the question: What is Worship? “Worship is the highest activity of the human spirit” says the New Zealand Prayer Book of the Anglican Church of Aotearoa. Food for thought!

***Diana Roberts***

---

## **Building Maintenance at Raumati Church**



*Dianne Boyce has been working on the gardens (with help from Flossie)*



*The newly stained crosses look very good against the exterior brickwork, thanks for organising this, and the painting, Kate*



*Our thanks to Monica Simpson and Dianne Boyce for clearing out the church foyer. Which has also made space for this magnificent monstera plant donated by Ken and Janet Milne.*

*There are also additional pot plants temporarily placed around the church which we are looking after for a local family whose home burnt down.*

# About People

To everyone who will be celebrating birthdays in June, we hope you enjoy your special day.

Special Birthday Greetings to Lilly Black who celebrated her 90th birthday in May.

To those celebrating an anniversary, congratulations on your special day.

Our thoughts are with those who are unwell at present and we hope you will soon be feeling better again.

We warmly welcome a new couple to our Raumati Congregation - Judi and John Redward who live in Paraparaumu.

**The Pastoral Care Team.**

Lyn, Diane, Diana, Bastiana, Dianne, Carole and Merrill

## A Gift So True

Each birthday comes, a gift so true,  
A blessing from God in all we do.  
No matter the age, His love remains,  
Guiding our steps through joys and pains.

With grateful hearts, we praise His name,  
For every year, He stays the same.  
So celebrate, rejoice, and pray,  
God walks beside you every day.

*Catherine Pulsifer*



# Raumati Women's Fellowship

Thank you to everyone for your contributions of towels and tins of food for HUHA. Our speaker on 14 May, Carolyn Press McKenzie who founded HUHA, was very grateful for the donations.

## Special Project Service



Thank you to everyone who attended the Raumati Women's fellowship Service led by Rev Anna Gilkison on 17 May and the fundraising morning tea which followed it.



*Jan Rae and Lyn Martin*

Hospital. It is special each year for Fellowship Women to have a mission focus to support and we appreciate very much the affirmation our congregation gives us.

A total of \$404.50 was received, and the funds will be shared between the two special projects: The Tonga Community Development Trust and the Starship



*crafts and art from Tonga*

# ***Please don't read the label***

**On the day after New Year's Day I made jam – nine pots of strawberry and eleven of Christmas plum. Getting the fruit wasn't a problem; there were boxes of slightly wizened plums and kilos of small but delicious berries available after the festive rush.**

Sugar and jam covers were easy, but jam jars were a different matter; I never seem to have enough. Last year the local walking group came to the rescue. On one of our expeditions I found a recycling bin full of empty jars which were speedily loaded into my backpack. A group member, learning of the situation through my clinking, chinking progress, brought round a box of jars a few days later. Lovely! But every one of those recycled jars had, of course, once had something in it, and every jar had manufacturers' labelling firmly attached to it.

I gave those jars the treatment, for who wants strawberry jam that says 'pickled gherkins', or jewel-like rose-red plum preserve identified as 'Australian orange marmalade'! I filled them with really hot water and tried to peel them. I soaked, scraped, scrubbed, and scratched; I even tried meths. Not a single label lifted off; instead there were strips and splotches, white rubbery patches, and the most incredibly sticky sport. Those pots look pretty grotty and when you hold one – juk!

I make jam because I like to give most of it away, but these messy jars detract greatly from the gift's appeal. Some of the recipients may decide that the contents could be as unappetising as the containers and reject the whole package.

The whole experience caused me to think about labels, especially the labels we stick on each other. Some of these are: old, young, dumb, fat, lazy, dirty, flaky, crazy, fundamentalist, liberal, terrorist, immigrant, beneficiary, enemy – there are hundreds.

Those labels stick very, very hard to those who wear them, and they obscure the real people underneath. Such labelling, even when its removed, damages the wearer permanently and leaves lasting misunderstanding.

Jesus didn't accept the labels that had been stuck on tax collectors and prostitutes, foreigners, the poor and uneducated, children, and the physically and mentally disabled. Equally, he questioned the labels of 'righteous' which some of the authority figures had attached to themselves. We need to look at the contents, not the labels; and be very careful about using any labels – they can be almost impossible to remove.

***Diana Roberts***

*From Methodist Touchstone*

*February 2003*

# Tiny Tunes Playgroup



We have been having a great term at playgroup. With the weather getting cooler we have been enjoying doing indoor crafts. We started off by making bird pictures. For this the kids

coloured in a picture of a bird and then stuck colourful feathers to the picture with glue. All the birds looked so beautiful.

One of my favourite activities to do at playgroup is Playdough. I enjoy making homemade playdough and adding scents like vanilla essence and lemons to make the playdough smell nice. We did a theme of cupcake playdough, so the kids pretended to make cupcakes and decorate them.



The week after that we got the kids to make something special for Mother's Day. They were given a plain wooden bookmark to colour in and put stickers on. Hopefully the mothers enjoyed their gift.

Last week we did an octopus craft. This involved threading cut up straws onto pipe cleaners. This activity was so good for their fine motor skills. I was so amazed at how well the kids did and how well they sat down and focused on the activity.



Thank you to our volunteers Maureen, Marie and Bev!

**Monica Simpson**

**Playgroup runs every Thursday in term time  
10 - 11.30am at Raumati Church Hall  
All are welcome**

Tea and coffee are provided for parents  
A \$2 donation is appreciated

# **Extracts Concerning Artificial Intelligence (AI) from Pope Leo XIV's "Magnifica Humanitas"**

issued 25 May 2026

*Technology is not simply a tool. When it becomes the standard by which everything is judged, it begins to dictate what matters and what can be discarded, reducing creation to an object of exploitation and human beings to mere cogs in a system driven toward ever greater efficiency.*

- For AI to respect human dignity and truly serve the common good, responsibility must be clearly defined at every stage: from those who design and develop these systems to those who use them and rely on them for concrete decisions.
- Misinformation has found a powerful amplifier with AI - through the ability to manipulate content, images and videos, which exposes people to biased or misleading perspectives.
- The data centres that are generating AI models consume enormous amounts of energy and water, significantly influencing carbon dioxide emissions. As demands increase, there is need for the development of more sustainable technological solutions.
- Those who control digital platforms, including social media, have a power that should be constantly guided by the pursuit of truth and respect for human dignity. The internet should be seen as a setting in which inner freedom and critical thought can mature, and not an instrument of excessive distraction, homogenization or dominance. The backdrop is that communication not only transmits information but creates culture.
- An alliance among policymakers, educational institutions, and families is needed to help navigate the culture of immediacy and hyperstimulation created in Youth by digital media. AI amplifies

the danger of predation on young people, who should not have personal mobile devices at too young an age.

- Online phenomena such as grooming, blackmail, and the sexual exploitation of minors are not uncommon, and are made more insidious by the use of fake profiles, algorithms that facilitate dangerous contact, and AI tools capable of manipulating images and videos.
- The pursuit of greater profits cannot justify choices that systematically sacrifice jobs, because the human person is an end, not a means, and the economic order must remain subordinate to human dignity and the common good.
- AI can bring conflict and war about more quickly and render it more impersonal. When making a decision to strike, there should be an identifiable chain of responsibility applying also to those who design, train, authorize and employ technology, and measures, so that target selection takes into account the difference between combatants and noncombatants, and the impact on defenceless populations.
- The world's wealth is increasingly concentrated in fewer hands, widening inequalities. Politicians are urged to orient policies toward the common good and to promote dignified work, social inclusion and an equitable distribution of the benefits of innovation.

***Let us remain faithful to the truth!***

*Living amid incessant flows of information, opinions and images, we know how easy it can be to influence decisions and preferences through increasingly sophisticated algorithms. In this context, it is imperative to cultivate hearts that love the truth, prefer what is right - despite the most appealing content - and pursue wisdom rather than immediate results*

# Raumati Village Community Garden



On Wednesday, we had a visit from a group of tamariki from Kapiti Children's Centre.

They are learning about kindness, sustainability and becoming kaitiaki (guardians). We talked about all these things and how they relate to the garden.



A guided tour of the garden, which included our rainwater tank and compost.



The highlight of their visit was planting broad bean seeds.

We are looking forward to another visit in a months time, to see how the seedlings are growing!



Members of the Tuesday Craft Group run by Allyson Dewe have been making hanging baskets for the porch outside Thrifty Place. We very much appreciate them sharing their talents and time, helping to make our op shop more attractive - thank you.

**Kate Foley**

# Poetry with Robin List: Poet for June: William Wordsworth

Wordsworth is generally and these days if at all, thought of as a Romantic poet, going on at considerable length about Nature; Daffodils and smog free London from Westminster Bridge. I've always been a bit dubious about the latter, as London had a reputation for air pollution and general filth back in the 13<sup>th</sup> century.



His business address has always been Lakes District in the back of my mind, however, and that was where he was mostly located in the TV series *The Other Miss Bennett*, which was a more artful piece of work than its surface let on. Am I wrong in thinking that Messers Hayward and Ryder were a potted summary of Jane Austen's *Sense and Sensibility*? And that's just a starter.

In winning Mary Bennett over to a more balanced world-view, Tom Hayward recites better known pieces of Wordsworth to her, often in a stunningly beautiful garden. Dónal Finn brings those pieces to life! They are heard for the first time. But we are still hearing only Wordsworth the poet of nature.



*William and Mary Wordsworth*

He was a poet who wrote passionately of faith and the decline of piety. He wrote many sonnets about the history of Christianity in Britain. Not surprisingly he did very well when he brought a focussed moment in the natural world and a theological issue for humanity together.

## The Wild Duck's Nest (published 1819)

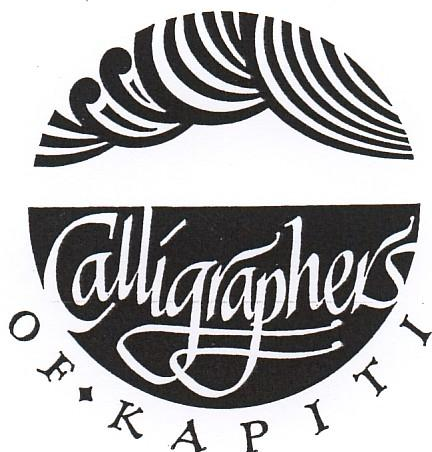
The imperial Consort of the Fairy-king  
Owns not a sylvan bower; or gorgeous cell  
With emerald floored, and with purpleal shell  
Ceilinged and roofed; that is so fair a thing  
As this low structure, for the tasks of Spring  
Prepared by one who loves the buoyant swell  
Of the brisk waves, yet here consents to dwell;  
And spreads in steadfast peace her brooding wing.  
Words cannot paint the oer'shadowing yew-tree bough,  
And dimly-gleaming Nest, - a hollow crown  
Of golden leaves inlaid with silver down,  
Fine as the mother's softest plumes allow:  
I gazed - and, self-accused while gazing, sighed  
For human-kind, weak slaves of cumbrous pride!



---

## ***Our Hirers***

---



This year the Calligraphers of Kapiti proudly celebrates its 25<sup>th</sup> anniversary. The club met for the first time in 2001 and not long afterwards began to have their meetings in the Kapiti Uniting Parish Meeting Room. We have met there ever since.

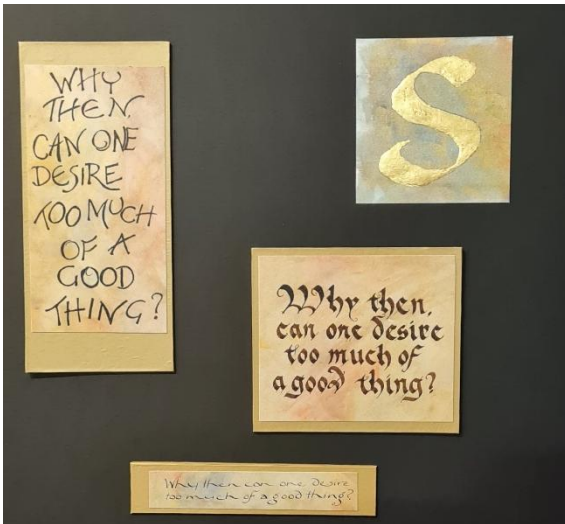
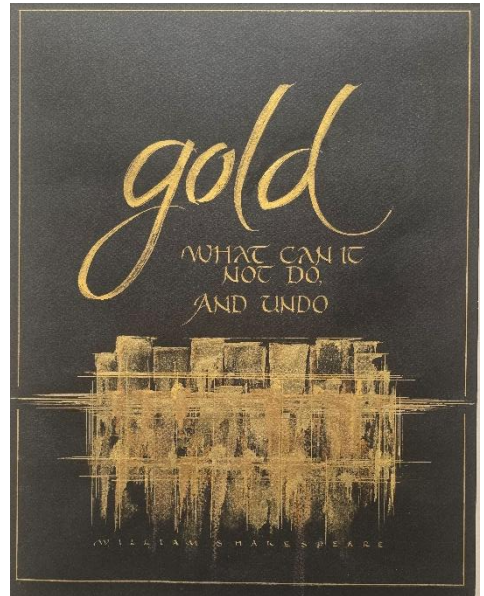
Our club began with fewer than ten members and meetings were informal, sharing ideas and skills. We now have over 45 members who have a wide range of ability, from learners to experienced and professional.

As the club grew we began to have workshops and what we affectionately called Do-it-Days with these often being held in the KUP hall. Some of our members are from out of town and are willing to travel to attend our workshops. We have also had tutors from Australia and other parts of New Zealand. Their workshops were always well attended and members developed new skills and scripts.

At times we held exhibitions in the Meeting Room, and often in the foyer, where members of the public were invited to view and purchase our pieces. Alongside these exhibitions, we would have sales tables where smaller examples of our calligraphers'

work was for sale. Hand made cards, booklets, bags, aprons and small boxes along with other calligraphic pieces were also available.

Something we are very proud of is our magazine Kapiti Letter. Over the years this too has become a showpiece of our workshops, exhibitions and monthly challenges. Our editor, Daniel Reeve, produces this very professional magazine three times a year.



The KUP Meeting Room provides us with an ideal place to meet and to share our work and ideas. It is also the perfect place to hold evening workshops.

We always welcome new members and gather in the Meeting Room at 7.00 pm on the 3<sup>rd</sup> Thursday of the month, February to November.

***If you are interested in what we do and would like to know more, please get in touch: [calligrapherskapiti@gmail.com](mailto:calligrapherskapiti@gmail.com)***

***Pauline Markham  
Secretary***

# Raumati Women's Fellowship

The Raumati women's Fellowship will hold their Annual General Meeting on Thursday 11 June at 10am in the meeting room.

Our speaker will be Pam Newey speaking about 'my life married to a seaman and the Wahine Disaster'. All women are very welcome!

Contacts        Lyn Martin 04 904 8361    022165 7523  
                      Merrill Baker 04 902 4134, 027 353 2307

---





# **Kapiti Uniting Parish**

*Invites you to attend our*

## **Anniversary Celebration**

***Highlighting 42 Years of commitment to  
active involvement in our community***

*with an*

## **All Congregations Service at Raumati Church**

*at*

**10am on 21st June**

*All are welcome*

*There will be a finger food lunch after the service.  
Please bring a plate of food to share if you are able*

**Common Expressions used in everyday speech  
with Old Testament origins**  
from 'Lay Preaching Basics' by Rosalie Sugrue

<b>Bone of my bones and flesh of my flesh</b>	Genesis 2:23 <i>creation</i>
<b>By the sweat of thy brow</b>	Genesis 3:19 <i>expulsion of Adam and Eve</i>
<b>Fat of the land</b>	Genesis 45:18 <i>promise to Joseph's brothers</i>
<b>Forbidden fruit</b>	Genesis 2:29 <i>Adam and Eve</i>
<b>Offer an olive branch</b>	Genesis 8:11 <i>dove returning to Ark</i>
<b>A drop in the bucket</b>	Isaiah 40:15 <i>human insignificance</i>
<b>Holier than thou</b>	Isaiah 65:5
<b>The four corners of the earth</b>	Isaiah 11:12 <i>Lord will gather Judah</i>
<b>A leopard cannot change its spots</b>	Jeremiah 13:23
<b>Feet of clay</b>	Daniel 2:23 <i>hidden weakness</i>

Originally compiled from:  
'I Never Knew that was in the Bible' Edited by Martin H. Manser, 1999

## June: for your diary

9	10am-12pm	Pastoral Care Group, Raumati
10	11am	Church Service at Sevenoaks
11	10am-12pm	Raumati Women's Fellowship
12	10-11.30am	Property and Finance Group, Raumati
16	10.30am	Waikanae Soup Group
18	10.30 – 11.15am	Coastal Villas Church Service
19	10am-12pm	Parish Council, Raumati
26	10am-12pm	Folding June Together

## June: Regular Events

Tuesdays	10am -12pm 10.30am – 4pm	Craft group, Raumati Thrifty Place
Thursdays	10am -12pm 10.30am – 4pm	Raumati Playgroup Thrifty Place
Saturdays	10.30am – 1pm	Thrifty Place

### **Donating to Kapiti Uniting Parish**

Donations are always welcome to help us with our Parish expenses and you can make your gift in different ways:

We have cash collection boxes at our services or In person at your bank, or online, to account:

**Kapiti Uniting Parish 03 0732 006311 00**

*Please put your name as reference for your payment so that we can issue a tax receipt which you can use to apply for a tax refund.*

## June Services

Date	Waikanae 10 am	United@9 9 am	Raumati 10 am
7	Rev Robin List HC	Rev Anna Gilkison HC	
14	Kevin Boyce	Maureen Calhaem	Rev Roger Wiig
21	10am Full Parish Anniversary Service at Raumati Rev Anna Gilkison		
28	Rev Anna Gilkison	Heather List	Rev Roger Wiig

### E-Prayer Requests

A group from our Parish receives requests for prayer every week. You can ring, text, or email to ask for the request to be passed on:

Merrill Baker 04 902 4134 or text 0273 532 307 or  
amkram.nz@gmail.com

Maureen Calhaem 04 299 1903 or text 0278 568 611 or  
maureen.calhaem@xtra.co.nz

*The requests will remain confidential and names will not be used without your permission.*

**Maureen and Merrill**

**WWW.kup.org.nz**

email: kapitiuniting@outlook.com Phone: 04 902 5809