



# KAPITI UNITING PARISH

Christian Churches of NZ - Methodist - Presbyterian

*Mission Statement: To promote Christian faith and values in the communities of the Kapiti Coast.*

## Weekly Notices: 12 February 2023

**Next Sunday  
12 February**

**United@9: 9 am:** Carole Rudings and Kate Foley  
**Waikanae 9.30 am:** Rev. Anna Gilkison, HC  
**Raumati 10 am:** Heather List

**Raumati Church Door Duty**  
Hugh and Maureen Evans

**Next Sunday  
19 February**

**United@9: 9 am:** Combined with Raumati at 10 am  
**Waikanae 9.30 am:** Rev. Anna Gilkison  
**Raumati 10 am:** Rev. Barrie Keenan

**Raumati Church Door Duty**  
Pam Newey, Mary White

**Lunch after Raumati Combined Service** Sunday 19 February, noon at Relish Café in Waikanae. All parish members are welcome to come along and enjoy lunch together. Please RSVP to Carole Rudings no later than Friday 17 February, at noon. Contact Carole on 298 8165 or crudings@yahoo.co.nz

### Lenten Studies 2023

#### Following Christ in the Footsteps of the Saints

Guided by the stories of St Winefride,  
Te Arikiniui Dame Te Atairangikaahu, Tarore of Waharoa,  
Te Whiti O Rongomai,  
Mary McKillop, Patron Saint of Australia

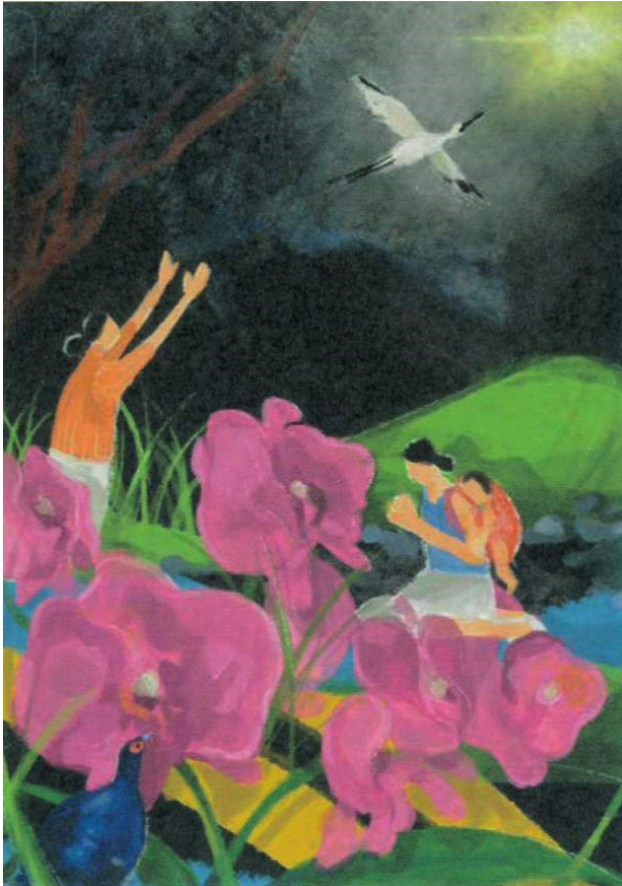
This is a **six week course**  
Tuesday afternoons, 2.30 to 3.30 pm  
February 28  
March 7, 14, 21, 28  
April 4

*These are simple, heartfelt studies which will still us into reflection and stir us into action*

Please join us at the Raumati Church, upstairs meeting room

You may come for single studies  
or commit to a six week Lenten journey  
of study and reflection.  
No theological qualifications necessary!

*Rev. Anna Gilkison*



# World Day of Prayer

Friday 3 March 2023

## "I Have Heard About Your Faith"

*A service prepared by the  
WDP Committee of Taiwan*

*You are invited to join in  
worship and fellowship  
at your local church*

Place: St. Paul's  
Cnr Langdale & Kapiti Rd.  
Paraparaumu

Time: 1.30pm

**Kapiti Community Foodbank:** Fresh vegetables go down a treat! A big thank you goes out to everyone who donated home-grown fresh produce this week. It's always a welcome addition to our clients food parcels. Our priority list is a mixed bag this week, including coffee, tampons, cooking oil and lunch box items. Did you know that fresh produce can be delivered directly to us at 17 Hinemoa Street, Paraparaumu. Otherwise if you can, pop an item into our food bins at participating supermarkets (look for our logo). Thanks again from the team at the *Kapiti Community Foodbank*

### Diary Dates

<b>Monday 13 February</b>		
Board Games	1.30 pm	Carole Rudings home
<b>Tuesday 14 February</b>		
Pastoral Care Group	10 am	Raumati
Thrifty Place	11 am - 4 pm	Raumati
<b>Wednesday 15 February</b>		
Music and Worship Group	10 am	Raumati
<b>Thursday 16 February</b>		
Raumati Playgroup	9.30 am - 11.30 am	Raumati
Thrifty Place	11 am - 4 pm	
Vege Co-op Collection	2.30 pm - 3 pm	Raumati
<b>Friday 17 February</b>		
Waikanae Playgroup	9.30 am - 11.30 am	Waikanae
<b>Deadline for March Together</b>		
<b>Saturday 18 February</b>		
Thrifty Place	10.30 am - 1 pm	